

News

United States
Department
of Labor



General Information: (312) 353-1880

Media Contact: Paul LaPorte

(312) 353-1138

Internet: <http://www.bls.gov/ro5>

<http://www.bls.gov/oes>

For Immediate Release:

Thursday, September 6, 2007

Nationwide, these were also the two highest-paying groups, with earnings of \$41.04 in legal and \$44.20 in management occupations.

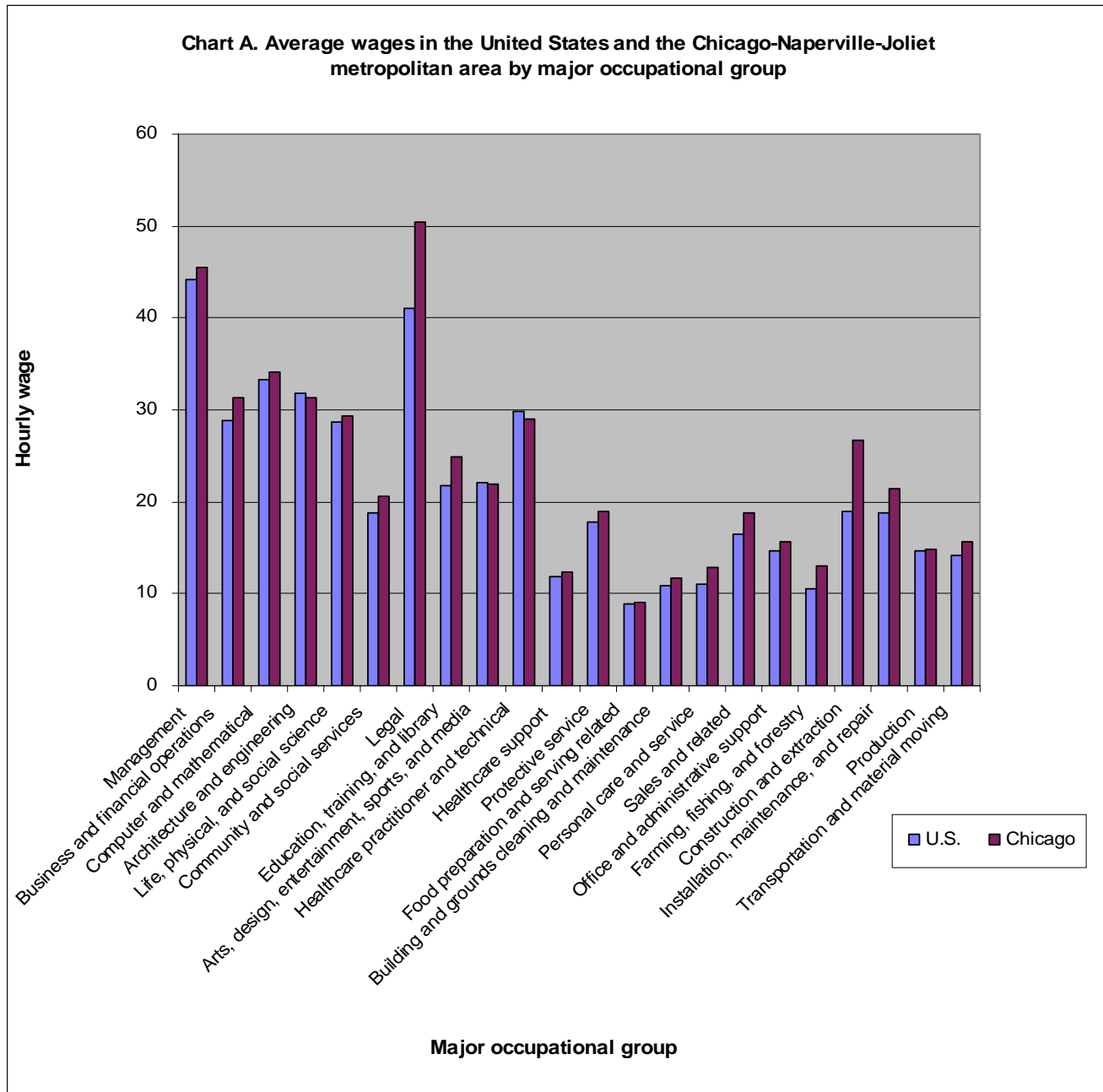
The average wage for the legal occupational group in the Chicago area was significantly above that for the nation. Locally, lawyers were among the highest paid occupations in this group at \$61.97 an hour, while title examiners, abstractors, and searchers were at the lower end of the wage scale averaging \$15.77 an hour. (Detailed occupational data are presented in table 1.)

The average wage for management occupations in the Chicago area was also significantly above that for the nation. Locally, hourly wages varied widely within this group. Chief executives were at the high end of the pay scale at \$76.15 per hour, while three occupations had hourly rates in the \$50.00 range (general and operations managers, sales managers, and financial managers). Four management occupations had rates near \$25.00 (lodging; social and community service; education administrators, preschool and child care center/program; and food service).

Table A. Occupational employment and wages by major occupational group, United States and Chicago-Naperville-Joliet metropolitan area, and measures of statistical significance, May 2006

Major occupational group	Employment share (percent of total)			Average (mean) hourly wage		
	United States	Chicago	Significant difference ¹	United States	Chicago	Significant difference ¹
Management	4.4%	4.4%	No	\$44.20	\$45.56	Yes

administrative support group, accounting for 28.6 percent of total employment in this group. (See table 1.)

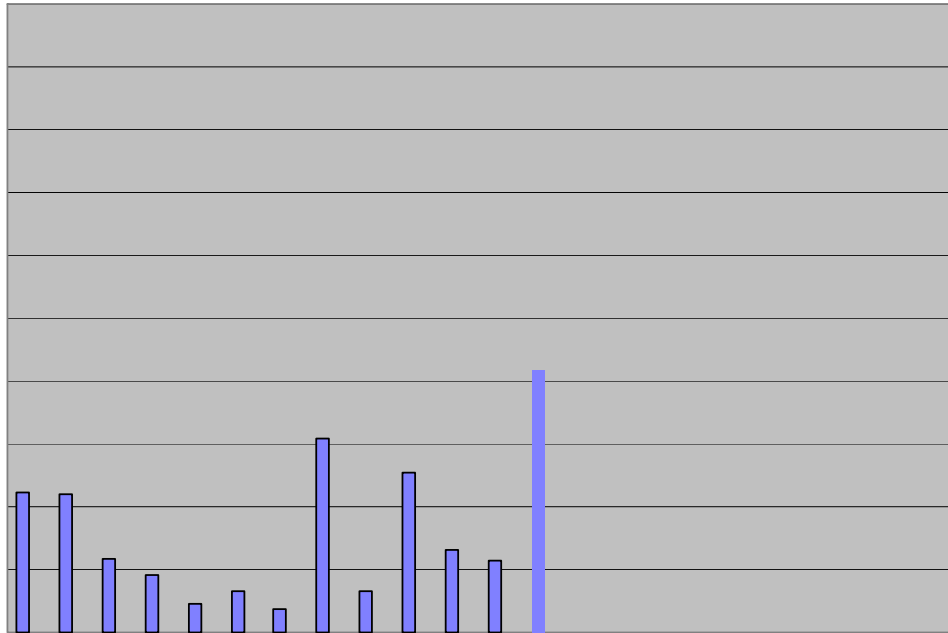


Sales and related jobs represented the second largest major occupational grouping with a 10.9-percent share of the local workforce compared to 10.6 percent nationwide. The relatively low-paid positions of retail salespersons (\$11.68) and cashiers (\$8.83) accounted for one-half of local employment in this group, with 136,130 and 103,260 workers, respectively. However, one other sales occupation in Chicago, wholesale and manufacturing sales representatives (except technical and scientific

products), accounted for about 13 percent of employment and had average earnings approaching \$33.00 an hour.

Two major occupational groups in the Chicago area accounted for 16.6 percent of the local workforce—production (8.5 percent) and transportation and material moving (8.1 percent). Both groups had employment shares above the corresponding national distribution of 7.7 and 7.3 percent, respectively. Within the production group, team assemblers were one of the largest occupations with 45,850 workers. Other production occupations with more than 10,000 workers in the Chicago area included machinists; inspectors, testers, sorters, samplers, and weighers; packaging and filling machine operators and tenders; and cutting, punching, and press machine setters, operators, and tenders (metal and plastic). Within the transportation and material moving occupational group, almost one-third (110,910) of the jobs were held by laborers and by those who move freight, stock, and material by hand. Heavy and tractor-trailer truck drivers was another large occupation in this group with employment of 54,450. The local wage rate for transportation and material moving jobs was significantly higher than the U.S. average--\$15.72 locally versus \$14.16 nationally.

The OES wage and employment data for the 22 major occupational groups in the Chicago metropolitan area were compared to their respective national averages based on statistical significance testing. Only those occupations with wages or employment



Technical Note

The Occupational Employment Statistics (OES) survey is a semiannual mail survey measuring occupational employment and wage rates for wage and salary workers in nonfarm establishments in the United States. Guam, Puerto Rico, and the Virgin Islands also are surveyed, but their data are not included in this release. OES estimates are constructed from a sample of about 1.2 million establishments. Forms are mailed to approximately 200,000 establishments in May and November of each year for a 3-year period. The nationwide response rate for the May 2006 survey was 78.1 percent based on establishments and 73.4 percent based on employment. The survey included establishments sampled in the May 2006, November 2005, May 2005, November 2004, May 2004, and November 2003 semiannual panels. The sample in the Chicago metropolitan area included 19,059 establishments with a response rate of 74 percent.

The occupational coding system

The OES survey uses the Office of Management and Budget's (OMB) occupational classification system, the Standard Occupational Classification (SOC) system. The SOC system is the first OMB-required occupational classification system for federal agencies. The OES survey categorizes workers in 1 of 801 detailed occupations. Together, these detailed occupations make up 23 major occupational groups, 22 of which are covered in this release. The one exception is military specific occupations which are not included in the OES survey.

For more information about the SOC system, please see the Bureau of Labor Statistics (BLS) Web site at <http://www.bls.gov/soc/home.htm>.

The industry coding system

The OES survey uses the North American Industry Classification System (NAICS). For more information about NAICS, see the BLS Web site at <http://www.bls.gov/bls/naics.htm>.

Survey sample

BLS funds the survey and provides the procedures and technical support, while the State Workforce Agencies (SWAs) collect most of the data. BLS produces cross-industry and industry-specific estimates for the nation, states, and metropolitan statistical areas (MSAs). Industry-specific estimates are produced at the NAICS sector, 3-digit, 4-digit, and selected 5-digit industry levels. BLS releases all cross-industry and national estimates; the SWAs release industry-specific estimates at the state and MSA levels.

State Unemployment Insurance (UI) files provide the universe from which the OES survey draws its sample. Employment benchmarks are obtained from reports submitted by employers to the UI program. The OES survey sample is stratified by metropolitan and nonmetropolitan areas and industry. Samples selected in panels prior to May 2005 were stratified using MSA definitions based on the 1990 Metropolitan Statistical Area standards. Beginning with the May 2005 panel, the sample was stratified using new MSA definitions based on the 2000 Metropolitan Statistical Area standards.

Concepts

Additional information

The May 2006 OES national data by occupation, comparable to data in table 1, are available on the BLS Web site at <http://www.bls.gov/oes>. Users also may access each occupation's definition and percentile wages. The May 2006 cross-industry data for states and metropolitan areas are available on the BLS Web site. Industry staffing patterns at the sector, 3-, 4-, and selected 5-digit NAICS levels also are also available from the Internet. These data include industry-specific occupational employment and wage data. A more detailed technical note for OES is available at <http://www.bls.gov/news.release/ocwage.tn.htm>.

OES information is also available through our regional web page at <http://www.bls.gov/ro5/home.htm>. If you have additional questions, you can contact an economist in the Chicago information office at (312) 353-1880, menu option 0, from 8 a.m. to 4 p.m. (CT). Information in this release will be made available to sensory impaired individuals upon request. Voice phone: 202-691-5200; TDD message referral phone number: 1-800-877-8339.

Table 1. Employment and wage data from the Occupational Employment Statistics survey, by occupation, Chicago-Naperville-Joliet, IL-IN-WI metropolitan area, May 2006

Occupation	Employment (1)	Wages		
		Mean tics	Mean survey, by	Median occupation,
Marketing managers.....	6,550	47.65	99,110	44
Sales managers.....	12,160	51.07	106,230	46
Public relations managers.....	1,670	45.19	94,000	36
Administrative services managers.....	8,810	31.22	64,940	27
Computer and information systems managers.....	10,110	49.62	103,210	45
Financial managers.....	15,930	51.44	107,000	46
Compensation and benefits managers.....	2,320	36.42	75,760	33
Training and development managers.....	990	35.94	74,760	33
Human resources managers, all other.....	2,150	42.96	89,360	40
Industrial production managers.....	4,330	40.06	83,320	37
Purchasing managers.....	2,650	39.51	82,180	36
Transportation, storage, and distribution managers.....	3,230	37.76	78,540	36
Farm, ranch, and other agricultural managers.....	(5)	17.56	36,520	22
Construction managers.....	4,280	44.39	92,330	40
Education administrators, preschool and child care center/program.....	1,010	24.44	50,840	21
Education administrators, elementary and secondary school.....	8,640	(3)	95,620	
Education administrators, postsecondary.....	2,500	35.54	73,930	30
Education administrators, all other.....	(5)	37.09	77,150	33
Engineering managers.....	5,290	48.88	101,680	45
Food service managers.....	4,360	22.97	47,770	20
Funeral directors.....	590	33.81	70,330	28
Gaming managers.....	80	29.66	61,700	31
Lodging managers.....	590	27.35	56,890	24
Medical and health services managers.....	5,750	37.95	78,940	34
Natural sciences managers.....	(5)	45.02	93,650	42
Postmasters and mail superintendents.....				
Property, real estate, and community association managers.....	250	31.90	66,340	32.30
Social and community service managers.....	3,830	30.96	64,400	25.08
Managers, all other.....	2,900	25.34	52,710	22.00
Business and financial operations occupations.....	26,280	39.44	82,040	36.16
Agents and business managers of artists, performers, and athletes.....	800	34.07	70,870	29.59
Purchasing agents and buyers, farm products.....	530	27.15	56,460	24.15
Wholesale and retail buyers, except farm products.....	6,680	26.25	54,600	22.00
Purchasing agents, except wholesale, retail, and farm products.....	8,710	27.31	56,800	25.11
Claims adjusters, examiners, and investigators.....	10,520	27.30	56,780	25.15
Insurance appraisers, auto damage.....	300	25.73	53,520	23.28
Compliance officers, except agriculture, construction, health and safety, and transportation.....	5,750	25.91	53,890	22.93
Cost estimators.....	6,830	30.60	63,640	29.73
Emergency management specialists.....	370	18.33	38,130	17.26
Employment, recruitment, and placement specialists.....	10,350	22.95	47,740	19.28
Compensation, benefits, and job analysis specialists.....	4,570	27.21	56,590	25.42
Training and development specialists.....	6,520	24.66	51,290	23.68
Human resources, training, and labor relations specialists, all other.....	7,420	27.17	56,510	25.24
Logisticians.....	1,360	29.76	61,910	28.46
Management analysts.....	20,090	39.99	83,180	34.46
Meeting and convention planners.....	1,980	26.04	54,170	24.60
Business operations specialists, all other.....	50,960	32.08	66,730	27.28
Accountants and auditors.....	46,660	32.10	66,770	28.30
Appraisers and assessors of real estate.....	1,960	24.24	50,410	21.26

See footnotes at end of table.

Table 1. Employment and wage data from the Occupational Employment Statistics survey, by occupation, Chicago-Naperville-Joliet, IL-IN-WI metropolitan area, May 2006--Continued

Occupation		Mean Hourly	Mean Annual (2)	Median Hourly
Budget analysts.....	1,680	36.94	76,830	33.97
Credit analysts.....	3,340	29.32	60,990	26.12
Financial analysts.....	10,700	39.27	81,680	32.91
Personal financial advisors.....	2,900	44.25	92,040	33.51
Insurance underwriters.....	5,730	29.56	61,490	24.96
Financial examiners.....	(5)	36.50	75,920	33.35
Loan counselors.....	1,660	23.49	48,870	20.59
Loan officers.....	13,840	32.06	66,680	27.52
Tax examiners, collectors, and revenue agents.....	(5)	31.68	65,890	30.49
Tax preparers.....	2,640	17.61	36,620	13.38
Financial specialists, all other.....	10,150	33.84	70,380	28.13
Computer and mathematical occupations.....	114,580	34.15	71,030	32.81
Computer and information scientists, research.....	1,030	44.08	91,680	42.25
Computer programmers.....	19,760	34.67	72,120	32.20
Computer software engineers, applications.....	14,450	38.27	79,590	37.15
Computer software engineers, systems software.....	12,960	42.21	87,810	41.99
10,1(pcions.....87i9rEer s9.....75t(Computer software engin...49738.2(91,680).-2994(42.25))T.J.-42.357.897534 TD(Computer programmers.....				

Table 1. Employment and wage data from the Occupational Employment Statistics survey, by occupation, Chicago-Naperville-Joliet, IL-IN-WI metropolitan area, May 2006--Continued

Occupation		Mean Hourly	Mean Annual (2)	Median Hourly
Environmental engineering technicians.....	360	21.74	45,220	21.18
Industrial engineering technicians.....	1,880	22.89	47,620	21.64
Mechanical engineering technicians.....	(5)	25.68	53,410	25.67
Engineering technicians, except drafters, all other.....	2,030	26.98	56,110	26.96
Surveying and mapping technicians.....	1,170	20.04	41,680	19.60
Life, physical, and social science occupations.....	38,710	29.31	60,970	26.31
Food scientists and technologists.....	530	33.23	69,120	33.46
Soil and plant scientists.....	(5)	23.76	49,420	25.36
Microbiologists.....	710	31.13	64,760	30.17
Biological scientists, all other.....	860	31.61	65,750	29.65
Conservation scientists.....	80	29.04	60,400	28.48
Foresters.....	70	28.49	59,250	27.86
Medical scientists, except epidemiologists.....	770	35.84	74,540	28.57
Life scientists, all other.....	390	29.58	61,520	26.73
Physicists.....	2,350	46.47	96,650	47.15
Atmospheric and space scientists.....	370	28.35	58,970	19.44
Chemists.....	2,590	30.46	63,350	27.21
Materials scientists.....	(5)	41.42	86,150	41.67
Environmental scientists and specialists, including health.....	1,610	33.28	69,210	30.73
Scientists and specialists, ologists, hydr, geogra.....	651	31.45	64,520	31.50

Table 1. Employment and wage data from the Occupational Employment Statistics survey, by occupation, Chicago-Naperville-Joliet,

Table 1. Employment and wage data from the Occupational Employment Statistics survey, by occupation, Chicago-Naperville-Joliet, IL-IN-WI metropolitan area, May 2006--Continued

Occupation		Mean Hourly	Mean Annual (2)	Median Hourly
Film and video editors.....	640	36.15	75,190	30.10
Media and communication equipment workers, all other.....	1,120	25.54	53,120	24.22
Healthcare practitioner and technical occupations.....	219,390	29.05	60,420	25.07
Chiropractors.....	1,140	45.89	95,460	34.08
Dentists, general.....	4,940	50.08	104,160	35.97
Oral and maxillofacial surgeons.....	(5)	(4)	(4)	(4)
Dentists, all other specialists.....	110	67.58	140,570	(4)
Dietitians and nutritionists.....	1,280	21.89	45,520	21.34
Optometrists.....	1,420	43.67	90,840	43.11
Pharmacists.....	7,020	47.56	98,910	45.38
Anesthesiologists.....	880	92.35	192,090	(4)
Family and general practitioners.....	2,000	64.46	134,070	66.49
Internists, general.....	1,460	69.20	143,940	68.34
Obstetricians and gynecologists.....	530	81.00	168,470	(4)
Pediatricians, general.....	740	58.47	121,620	54.37
Psychiatrists.....	420	53.67	111,630	56.16
Surgeons.....	2,460	84.09	174,910	(4)
Physicians and surgeons, all other.....	5,130	73.74	153,390	(4)
Physician assistants.....	1,420	31.87	66,280	26.77
Podiatrists.....	330	58.99	122,700	61.82
Registered nurses.....	77,620	28.55	59,390	27.85
Audiologists.....	240	26.20	54,500	25.65
Occupational therapists.....	2,810	31.80	66,150	30.81
Physical therapists.....	5,100	33.24	69,140	31.61
Radiation therapists.....	430	30.55	63,530	28.86
Recreational therapists.....	1,090	16.67	34,670	15.51
Respiratory therapists.....	3,350	22.62	47,050	22.85
Speech-language pathologists.....	4,610	29.77	61,910	28.91
Therapists, all other.....	1,270	20.80	43,270	20.03
Veterinarians.....	1,420	37.53	78,060	33.35
Health diagnosing and treating practitioners, all other.....	4,240	32.20	66,970	17.88
Medical and clinical laboratory technologists.....	5,920	23.45	48,780	23.44
Medical and clinical laboratory technicians.....	5,150	18.15	37,760	16.84
Dental hygienists.....	4,390	31.58	65,690	32.88
Cardiovascular technologists and technicians.....	1,540	23.02	47,870	19.71
Diagnostic medical sonographers.....	1,180	27.88	57,980	28.12
Nuclear medicine technologists.....	540	30.41	63,240	30.19
Radiologic technologists and technicians.....	5,080	24.38	50,720	24.65
Emergency medical technicians and paramedics.....	8,370	15.30	31,820pTD((.

Table 1. Employment and wage data from the Occupational Employment Statistics survey, by occupation, Chicago-Naperville-Joliet, IL-IN-WI metropolitan area, May 2006--Continued

Occupation		Mean Hourly	Mean Annual (2)	Median Hourly
Home health aides.....	18,170	10.43	21,700	9.77
Nursing aides, orderlies, and attendants.....	38,270	10.85	22,570	10.50
Psychiatric aides.....	560	11.19	23,280	10.94
Occupational therapist assistants.....	1,280	20.53	42,690	21.16
Occupational therapist aides.....	600	16.42	34,160	15.13
Physical therapist assistants.....	1,850	20.05	41,700	20.29
Physical therapist aides.....	1,940	12.09	25,150	11.14
Massage therapists.....	1,590	21.12	43,930	18.91
Dental assistants.....	10,140	14.59	30,350	14.77
Medical assistants.....	9,570	14.03	29,180	13.43
Medical equipment preparers.....	830	13.82	28,750	13.01
Medical transcriptionists.....	1,860	15.72	32,690	15.41
Pharmacy aides.....	2,160	12.92	26,870	13.06
Veterinary assistants and laboratory animal caretakers.....	1,940	10.14	21,080	9.74
Healthcare support workers, all other.....	7,370	12.80	26,620	11.95
Protective service occupations.....	108,970	18.92	39,350	15.36
First-line supervisors/managers of correctional officers.....	430	31.00	64,480	29.54
First-line supervisors/managers of police and detectives.....	2,330	39.21	81,550	39.81
First-line supervisors/managers of fire fighting and prevention workers.....	(5)	38.15	79,350	39.70
First-line supervisors/managers, protective service workers, all other.....	1,410	21.36	44,420	19.70
Fire fighters.....	12,860	22.56	46,930	21.84
Fire inspectors and investigators.....	470	23.56	49,000	23.93
Detectives and criminal investigators.....	3,230	35.33	73,490	37.49
Parking enforcement workers.....	(5)	16.80	34,940	16.23
Police and sheriff's patrol officers.....	(5)	27.89	58,010	29.81
Transit and railroad police.....	(5)	20.42	42,480	19.36
Animal control workers.....	260	16.48	34,280	16.46
Private detectives and investigators.....	970	16.58	34,490	15.59
Security guards.....	42,390	11.66	24,260	10.64
Crossing guards.....	3,080	11.85	24,660	11.61
Lifeguards, ski patrol, and other recreational protective service workers.....	6,140	8.34	17,360	8.05
Protective service workers, all other.....	(5)	13.20	27,460	11.47
Food preparation and serving related occupations.....	324,390	9.06	18,850	7.74
Chefs and head cooks.....	4,070	17.54	36,490	14.59
First-line supervisors/managers of food preparation and serving workers.....	18,520	16.16	33,610	14.99
Cooks, fast food.....	20,360	7.78	16,190	7.09
Cooks, institution and cafeteria.....	9,300	10.81	22,480	10.38
Cooks, restaurant.....	(5)	9.04	18,790	8.16
Cooks, short order.....	5,150	9.38	19,500	8.83
Cooks, all other.....	620	10.87	22,620	10.41
Food preparation workers.....	34,450	8.71	18,120	8.15
Bartenders.....	15,940	9.06	18,850	7.67
Combined food preparation and serving workers, including fast food.....	59,530	7.85	16,320	7.36
Counter c9.....(t..30)-35rcTD(Cou.....88mm2/aomclud2Tnve sercoffee....p.....)Tj46.9097 0 TD(.....)Tj3.9249249 -0.022133.....				

Table 1. Employment and wage data from the Occupational Employment Statistics survey, by occupation, Chicago-Naperville-Joliet, IL-IN-WI metropolitan area, May 2006--Continued

Occupation		Mean Hourly	Mean Annual (2)	Median Hourly
Pest control workers.....	900	17.39	36,180	15.76
Landscaping and groundskeeping workers.....	32,800	11.59	24,110	10.52
Pesticide handlers, sprayers, and applicators, vegetation.....	950	20.18	41,970	17.41
Tree trimmers and pruners.....	140	16.95	35,260	15.89
Grounds maintenance workers, all other.....	(5)	10.45	21,730	8.43
Personal care and service occupations.....	108,430	12.88	26,780	10.00
Gaming supervisors.....	(5)	21.06	43,810	21.18
Slot key persons.....	170	(3)	(3)	(3)
First-line supervisors/managers of personal service workers.....	3,210	19.73	41,040	17.19
Animal trainers.....	180	16.58	34,480	15.19
Nonfarm animal caretakers.....	4,030	10.10	21,010	8.55
Gaming dealers.....	(5)	7.32	15,220	6.86
Gaming and sports book writers and runners.....	(5)	14.74	30,650	16.43
Motion picture projectionists.....	230	(3)	(3)	(3)
Ushers, lobby attendants, and ticket takers.....	5,680	8.11	16,860	7.56
Amusement and recreation attendants.....	5,410	9.87	20,540	8.39
Costume attendants.....	(5)	13.97	29,070	10.57
Locker room, coatroom, and dressing room attendants.....	(5)	9.59	19,950	9.12
Embalmers.....	260	(3)	(3)	(3)
Funeral attendants.....	1,030	10.66	22,170	10.40
Barbers.....	(5)	14.77	30,730	11.93
Hairdressers, hairstylists, and cosmetologists.....	13,400	12.19	25,350	11.15
Makeup artists, theatrical and performance.....	(5)	13.83	28,760	12.28
Manicurists and pedicurists.....	(5)	11.96	24,880	12.22
Shampooers.....	1,530	9.51	19,770	8.28
Skin care specialists.....	1,330	14.77	30,710	14.35
Baggage porters and bellhops.....	1,870	8.94	18,600	8.19
Concierges.....	1,150	11.84	24,630	12.29
Tour guides and escorts.....	830	10.88	22,620	8.79
Travel guides.....	40	20.01	41,630	18.60
Flight attendants.....	9,640	(3)	56,920	(3)
Transportation attendants, except flight attendants and baggage porters.....	1,880	9.19	19,120	9.00
Child care workers.....	13,080	9.64	20,040	9.10
Personal and home care aides.....	9,710	8.99	18,690	8.39

nd home care aides..Res8ue,61,T76il.....drM[40]-28n4e582ar603 -0.0226 TD[830]-2887.9(10.88)-2738.2(22,6...142.....02.....1.....29,4.....)Tj12.8817 -0.0226

Table 1. Employment and wage data from the Occupational Employment Statistics survey, by occupation, Chicago-Naperville-Joliet, IL-IN-WI

Table 1. Employment and wage data from the Occupational Employment Statistics survey, by occupation, Chicago-Naperville-Joliet, IL-IN-WI metropolitan area, May 2006--Continued

Occupation		Mean Hourly	Mean Annual (2)	Median Hourly
Mail clerks and mail machine operators, except postal service.....	6,620	11.35	23,610	10.56
Office clerks, general.....	83,670	12.72	26,460	11.93
Office machine operators, except computer.....	4,160	12.30	25,580	11.54
Proofreaders and copy markers.....	430	14.41	29,960	14.11
Statistical assistants.....	330	15.43	32,100	15.76
Office and administrative support workers, all other.....	19,190	15.36	31,950	13.60
Farming, fishing, and forestry occupations.....	2,680	13.01	27,070	10.34
First-line supervisors/managers of farming, fishing, and forestry workers.....	90	23.48	48,840	19.46

Table 1. Employment and wage data from the Occupational Employment Statistics survey, by occupation, Chicago-Naperville-Joliet, IL-IN-WI metropolitan area, May 2006--Continued

Occupation		Mean Hourly	Mean Annual (2)	Median Hourly
Highway maintenance workers.....	3,080	19.53	40,620	19.67
Septic tank servicers and sewer pipe cleaners.....	640	19.54	40,640	19.37
Construction and related workers, all other.....	1,160	(3)	(3)	(3)
Earth drillers, except oil and gas.....	(5)	21.17	44,030	20.78
Mine cutting and channeling machine operators.....	90	15.21	31,630	15.23
Helpers--extraction workers.....	(5)	19.67	40,910	18.56
Extraction workers, all other.....	80	(3)	(3)	(3)
Installation, maintenance, and repair occupations.....	151,580	21.36	44,430	20.51

Table 1. Employment and wage data from the Occupational Employment Statistics survey 1996-2007. Occupational Employment Statistics wage data from the Occupational Employment

Table 1. Employment and wage data from the Occupational Employment Statistics survey, by occupation, Chicago-Naperville-Joliet, IL-IN-WI metropolitan area, May 2006--Continued

Occupation		Mean Hourly	Mean Annual (2)	Median Hourly
Extruding and forming machine setters, operators, and tenders, synthetic and glass fibers.....	230	14.08	29,280	13.76
Fabric and apparel patternmakers.....	(5)	11.19	23,270	9.17
Upholsterers.....	980	15.58	32,410	14.68
Textile, apparel, and furnishings workers, all other.....	940	10.69	22,230	9.75
Cabinetmakers and bench carpenters.....	3,080	17.68	36,770	17.82
Furniture finishers.....	520	16.79	34,920	16.47
Patternmakers, wood.....	(5)	12.23	25,430	11.48
Sawing machine setters, operators, and tenders, wood.....	280	14.41	29,980	12.71
Woodworking machine setters, operators, and tenders, except sawing.....	1,030	14.93	31,060	13.66
Woodworkers, all other.....	370	10.93	22,740	10.41
Power distributors and dispatchers.....	(5)	29.09	60,510	28.78
Power plant operators.....	500	25.79	53,650	26.33
Stationary engineers and boiler operators.....	1,370	29.53	61,430	30.52
Water and liquid waste treatment plant and system operators.....	2,220	23.63	49,150	22.29
Chemical plant and system operators.....				

Table 1. Employment and wage data from the Occupational Employment Statistics survey, by occupation, Chicago-Naperville-Joliet, IL-IN-WI metropolitan area, May 2006--Continued

Occupation		Mean Hourly	Mean Annual (2)	Median Hourly
Ambulance drivers and attendants, except emergency medical technicians.....	(5)	9.47	19,700	8.03
Bus drivers, school.....	15,710	13.05	27,150	12.78
Driver/sales workers.....	8,330	15.33	31,880	13.55
Truck drivers, heavy and tractor-trailer.....	54,450	20.24	42,100	19.85
Truck drivers, light or delivery services.....	29,000	14.90	31,000	13.87
Taxi drivers and chauffeurs.....	3,410	12.77	26,560	10.21
Motor vehicle operators, all other.....	2,640	16.26	33,820	14.71
Rail yard engineers, dinkey operators, and hostlers.....	760	17.72	36,860	15.65
Sailors and marine oilers.....	560	15.49	32,230	15.19
Captains, mates, and pilots of water vessels.....	480	22.00	45,760	23.13
Motorboat operators.....	130	14.54	30,250	11.55
Ship engineers.....	120	(3)	(3)	(3)
Bridge and lock tenders.....	130	21.42	44,560	21.90
Parking lot attendants.....	(5)	9.92	20,640	9.00
Service station attendants.....	890	9.10	18,930	7.93
Transportation inspectors.....	550	27.48	57,160	25.85
Conveyor operators and tenders.....	1,150	13.68	28,450	13.46
Crane and tower operators.....				