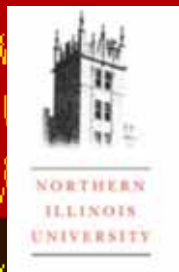


# Hyper-alkaline Waters in Calumet Wetlands (South Chicago, IL):

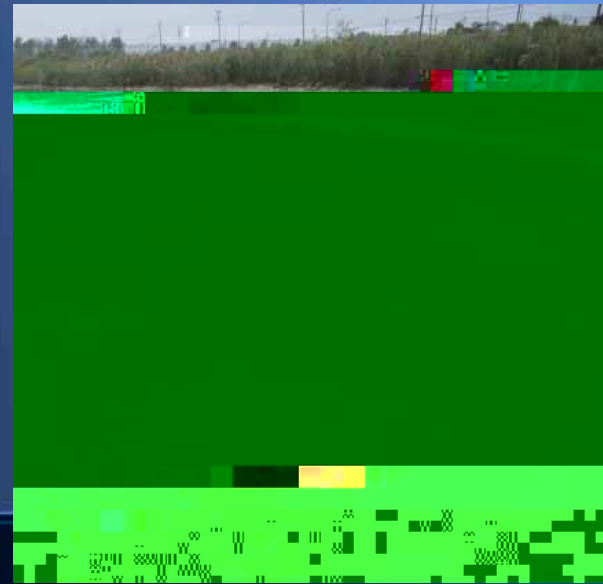
Karel Waska and Melissa Lenczewski

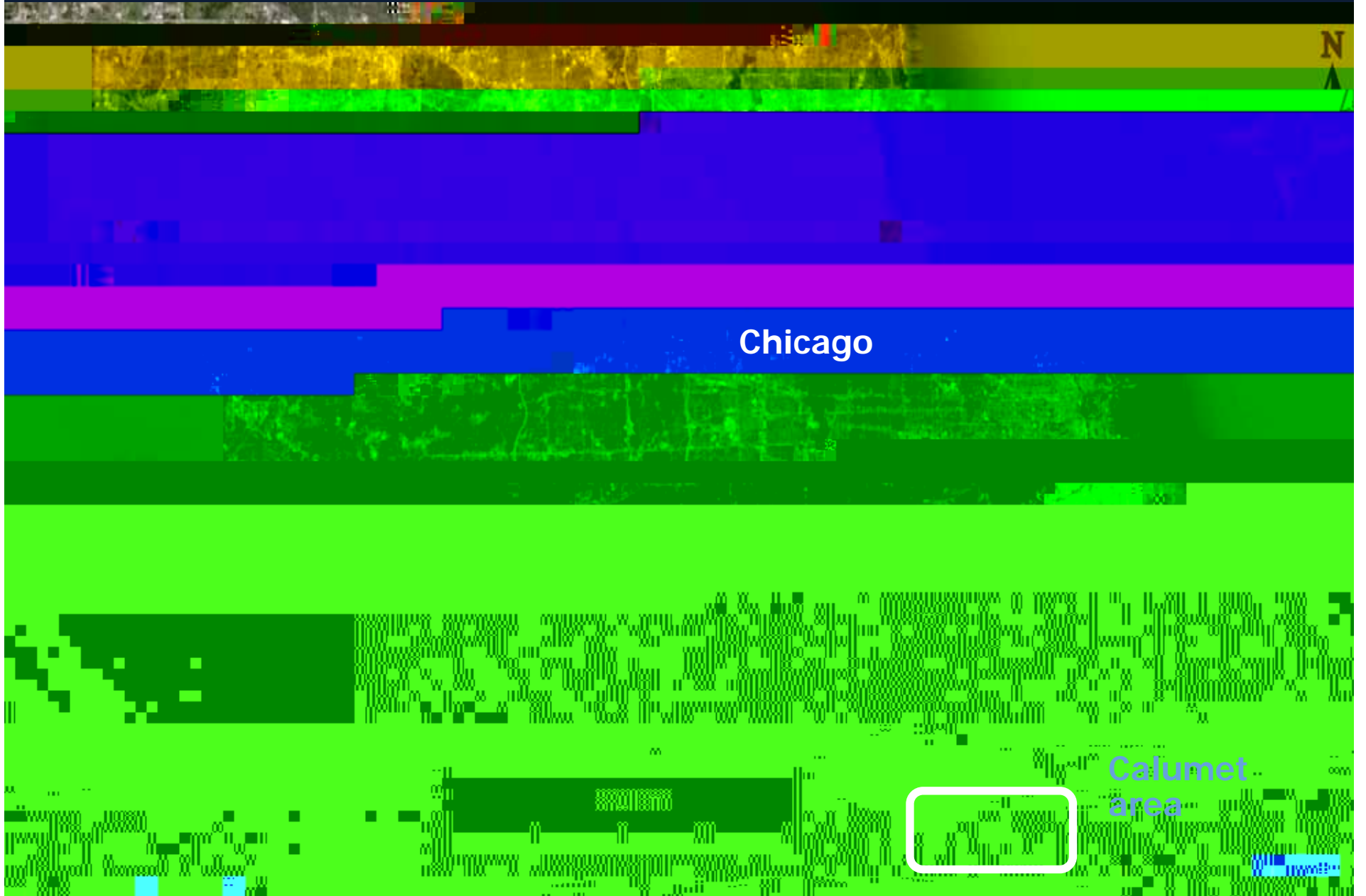
Northern Illinois University,  
Department of Geology and Environmental Geosciences





- A
- A
- A





Karel Waska

HYPER-ALKALINE WATERS IN CALUMET WETLANDS

Introduction | Questions | Methods | Results | Conclusion | Future work | 5/23





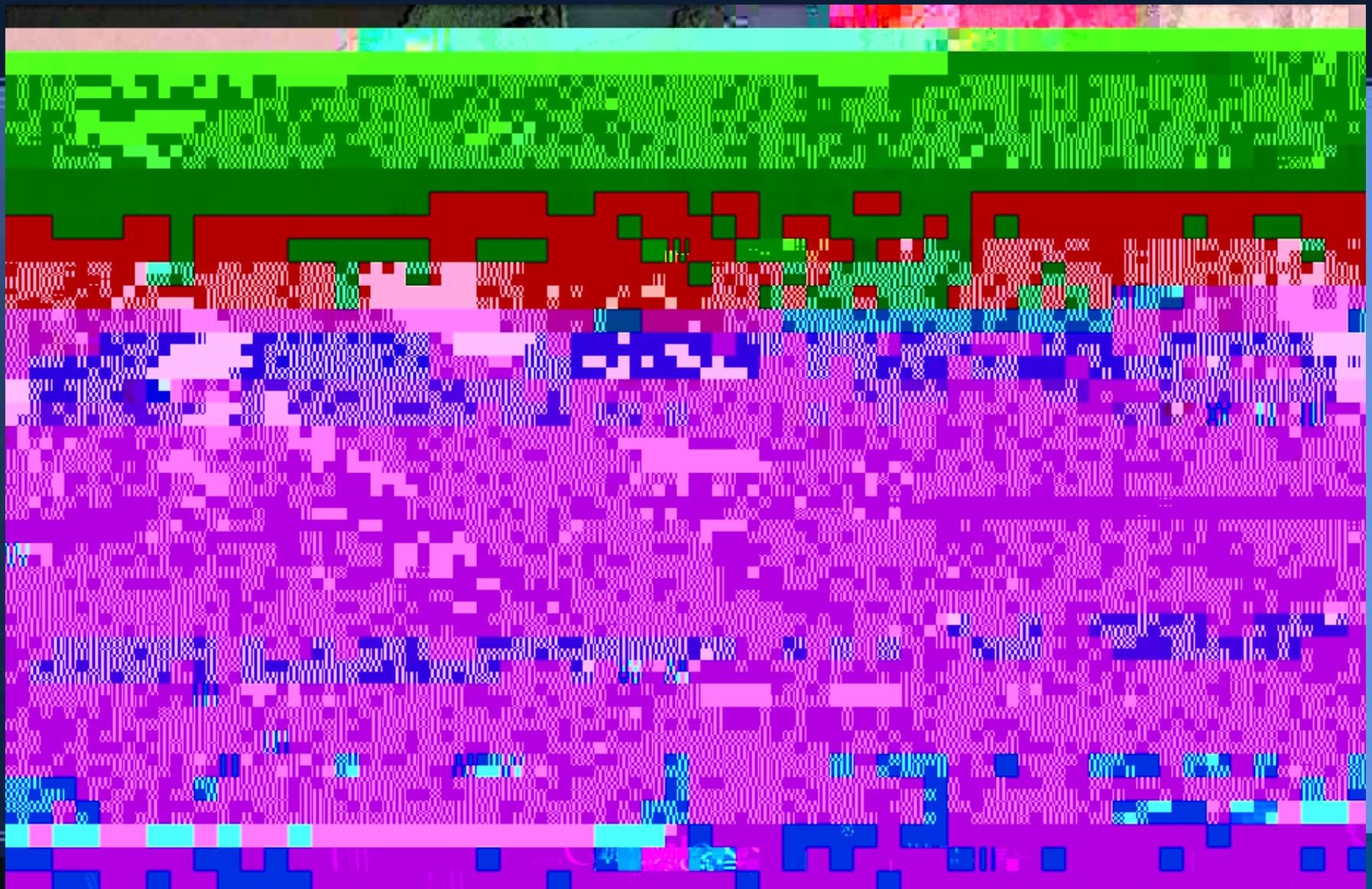
Karel Waska  
Introduction

HYPER-ALKALINE WATERS IN CALUMET WETLANDS

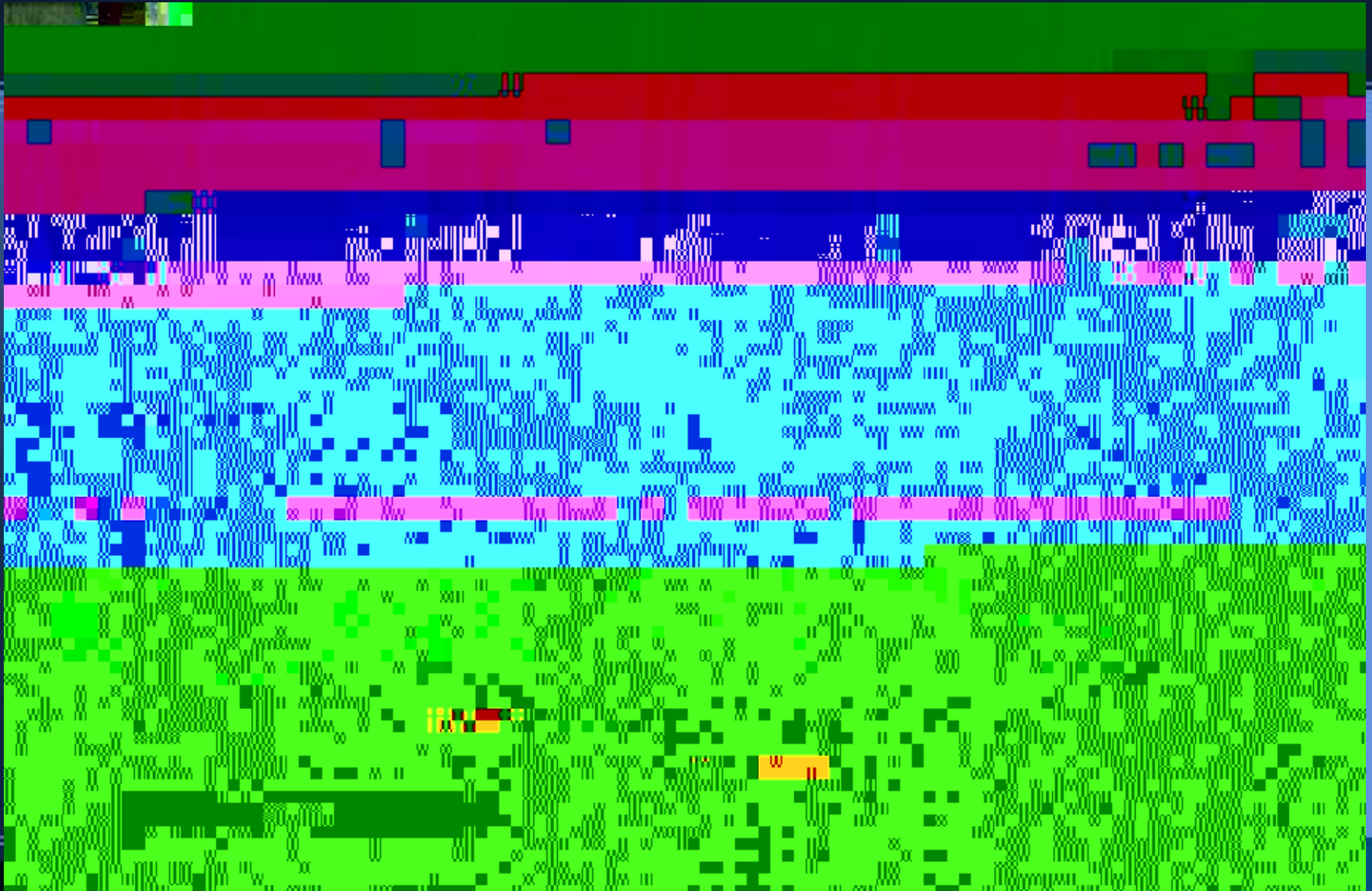
Karel Waska

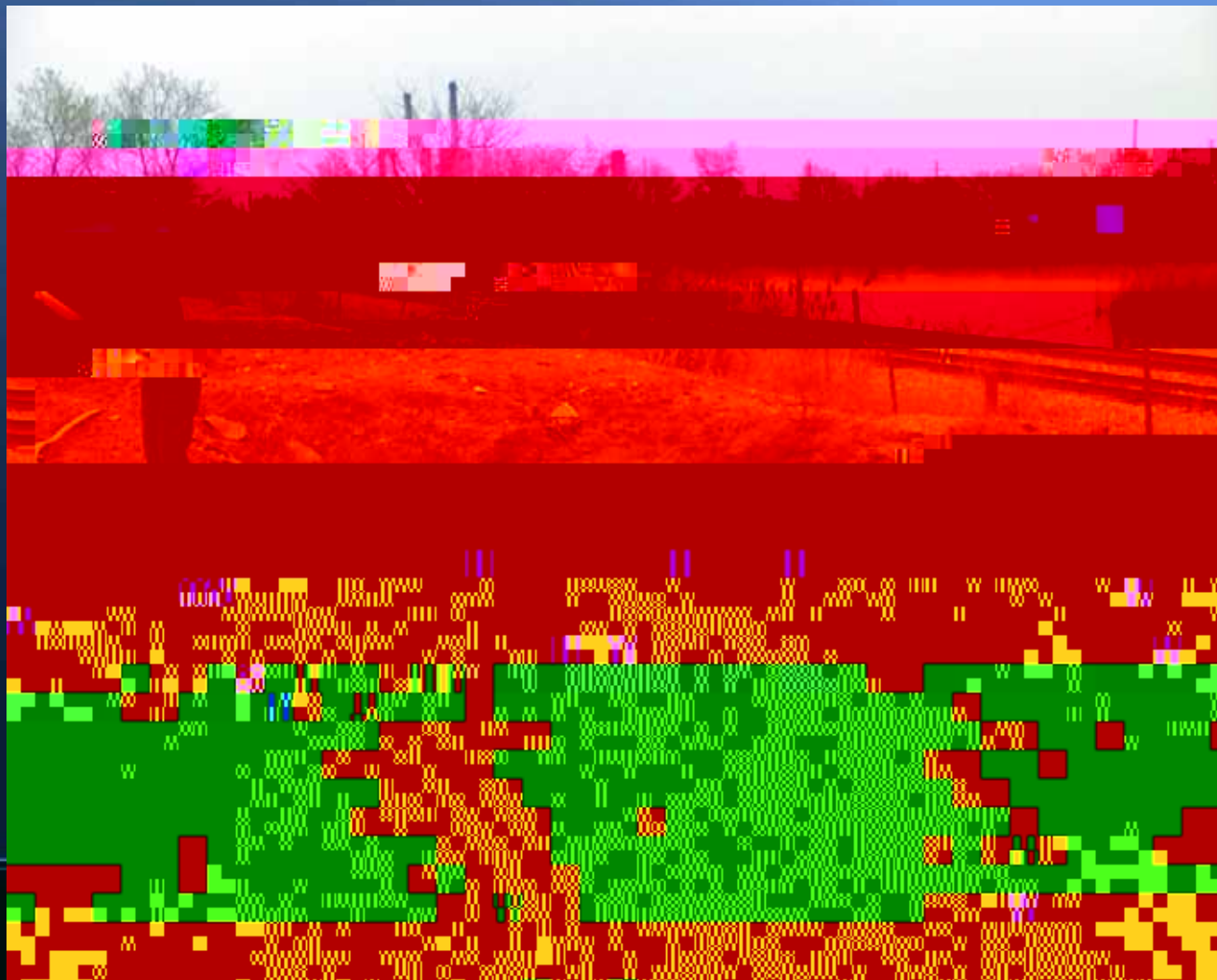
HYPER-ALKALINE WATERS IN CALUMET WETLANDS

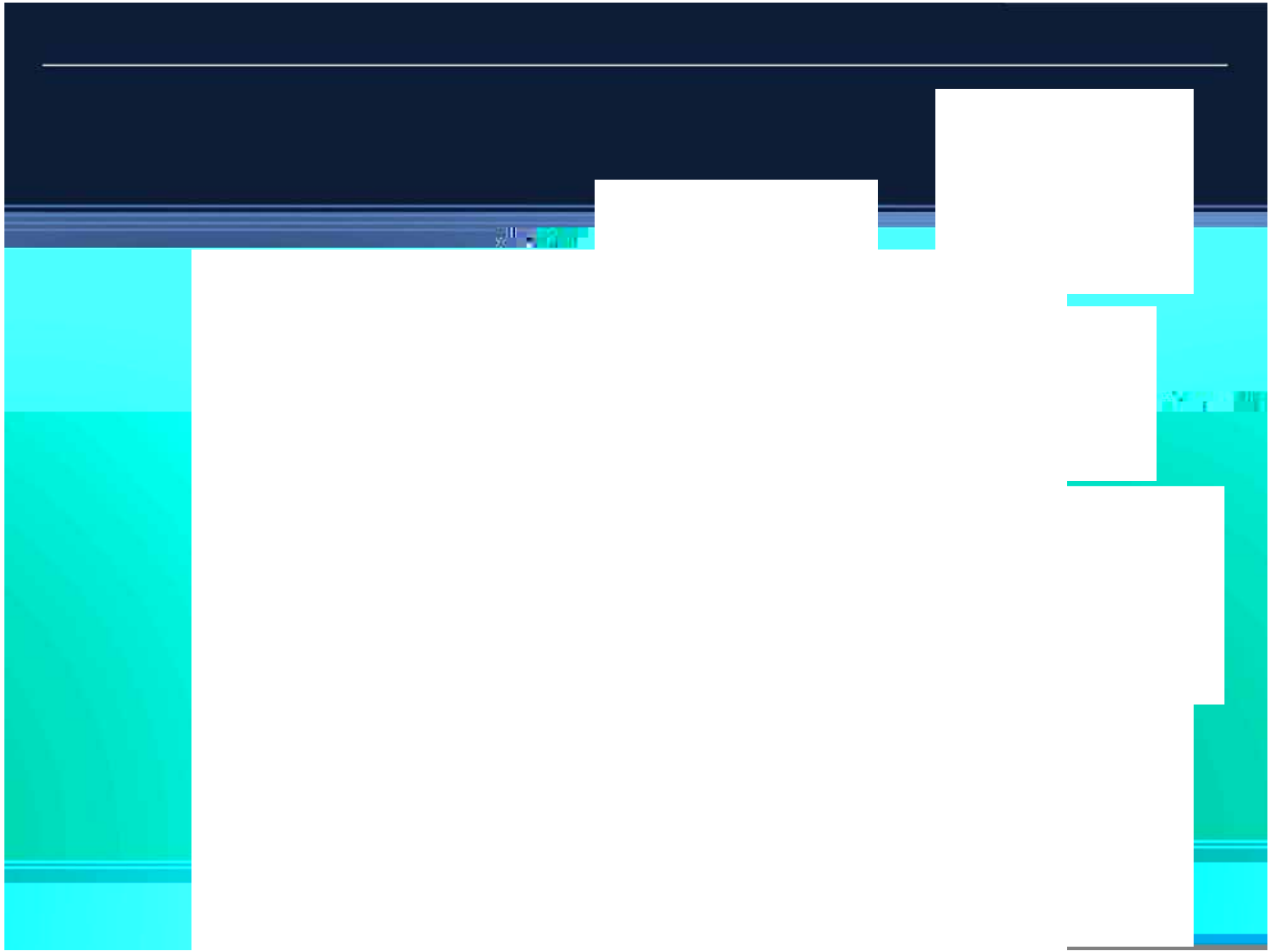
Introduction | Questions













A  
A  
A  
A  
A  
A  
A  
A  
A

A

01 20 07

2

A

A

A

A

A

A

A  
A

A  
A  
A  
A

A  
A  
A

All samples transported in  $\sim 5^{\circ}\text{C}$  and processed within one day

---





A

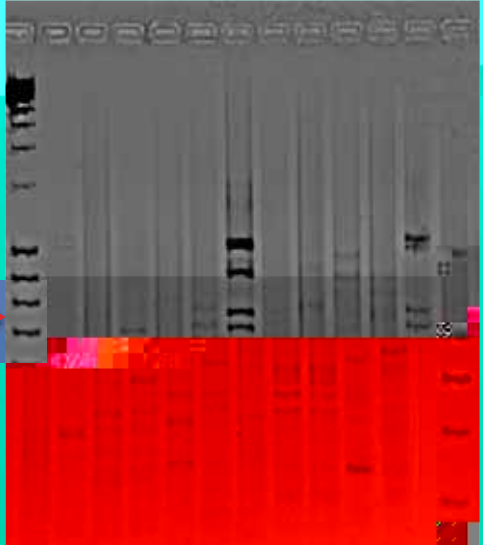
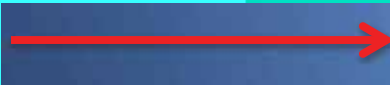
A

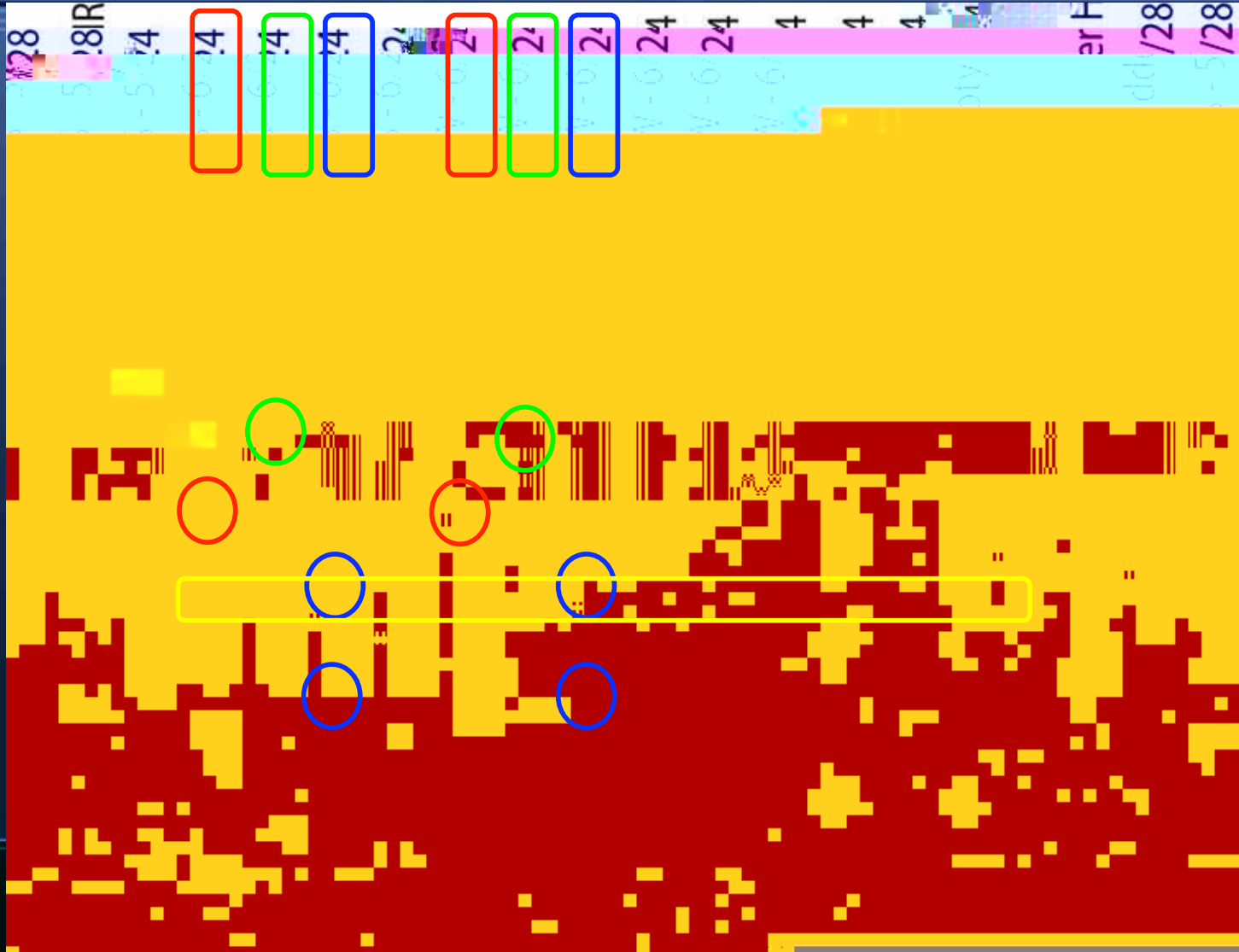
A

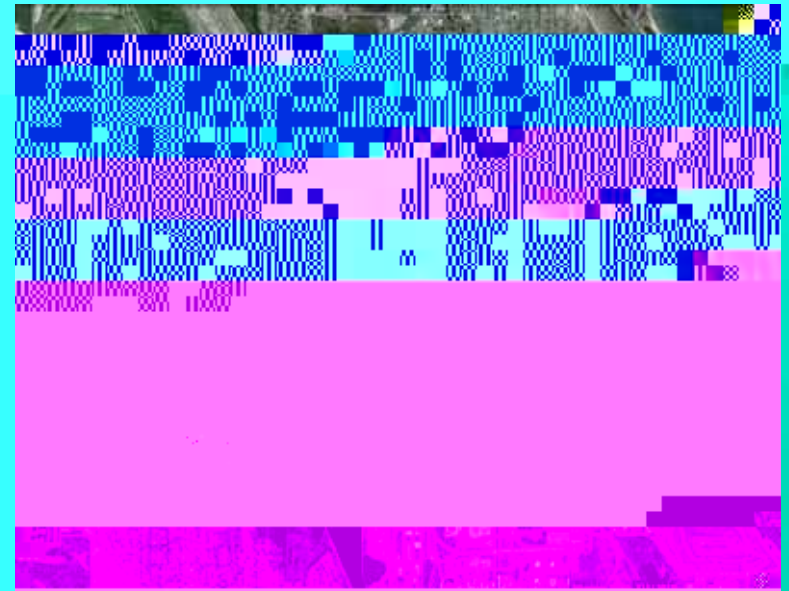
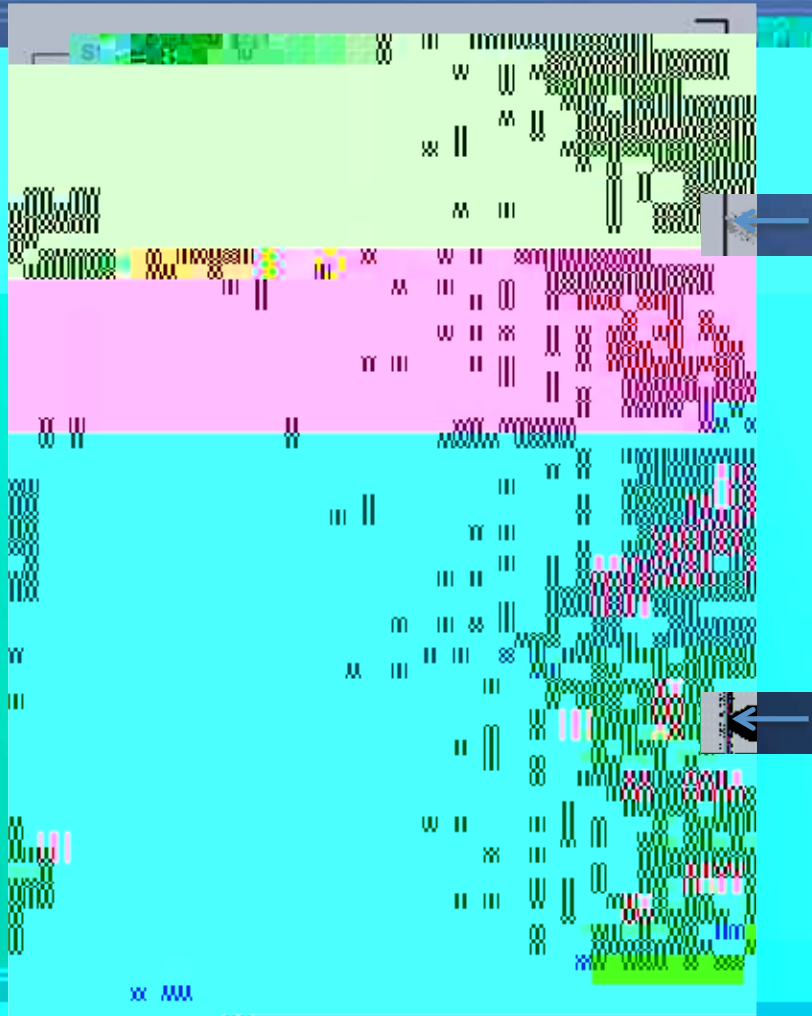
A

A

A







- A
- A
- A
- A
- A
- A
- A
- A









- A
- A
- A
- A
  
- A
- A
  
- A



---

A CONSTRUCTED COLUMN EXPERIMENT:

A 8 columns in duplicates for the two temperature incubations:

A 1 natural control column

A 1 autoclaved ("kill") control column

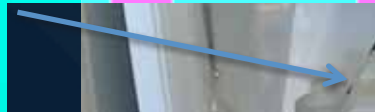
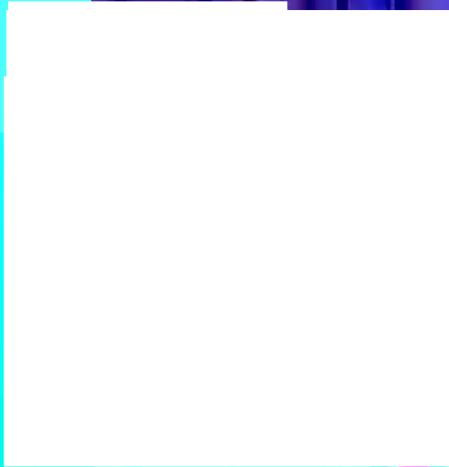
A 2 dolomite incubations (top or bottom of column)

A 2 quartz sand incubations

A 2 Apatite II™ incubations

A Monitoring influent and effluent on pH, geochemistry, and microbial activity





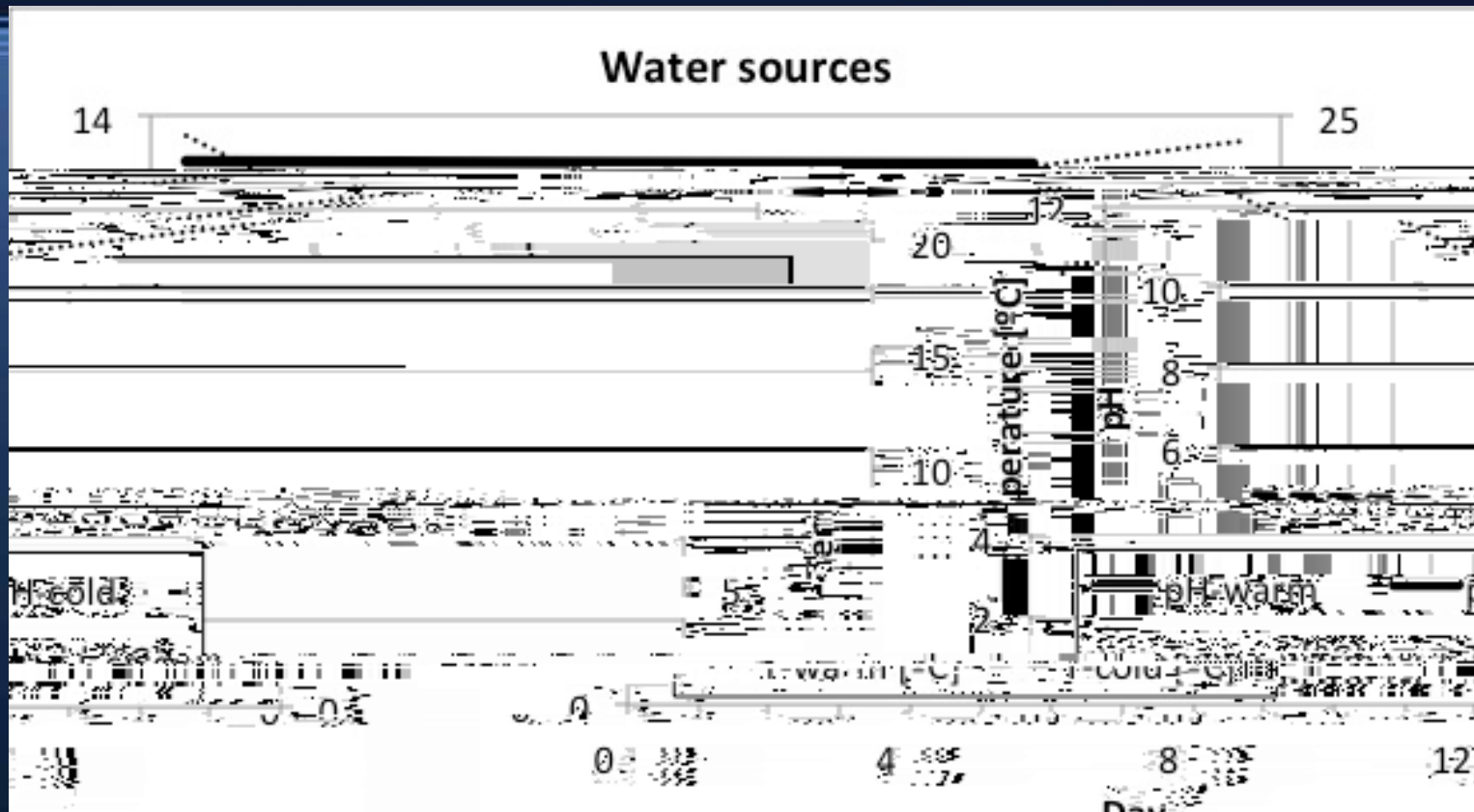


Karel Waska

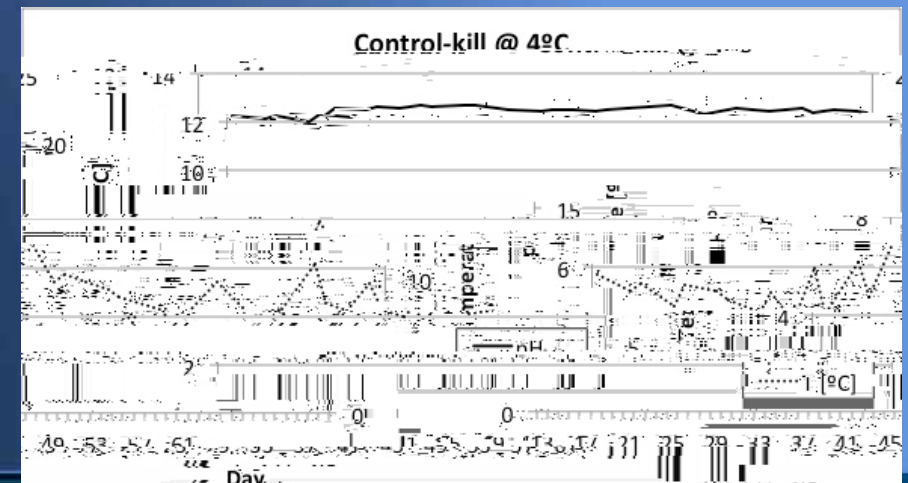
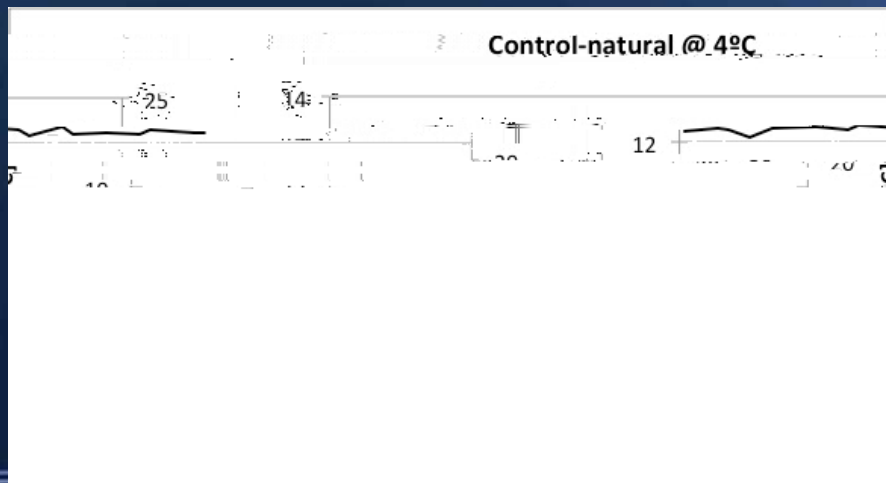
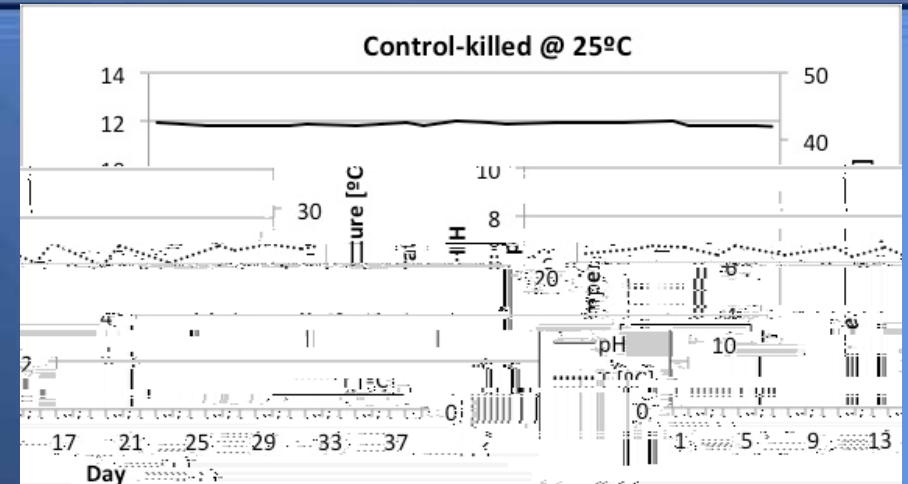
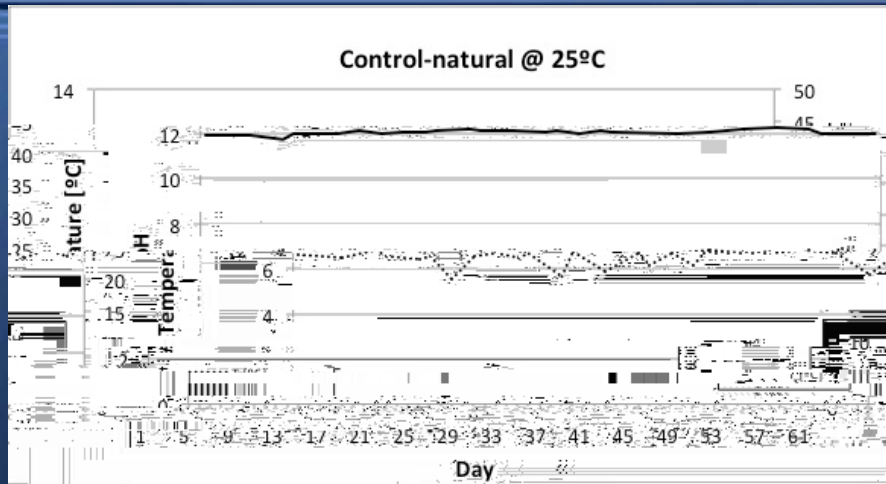
HYPER-ALKALINE WATERS IN CALUMET WETLANDS

Introduction | Questions | Methods | **Results**

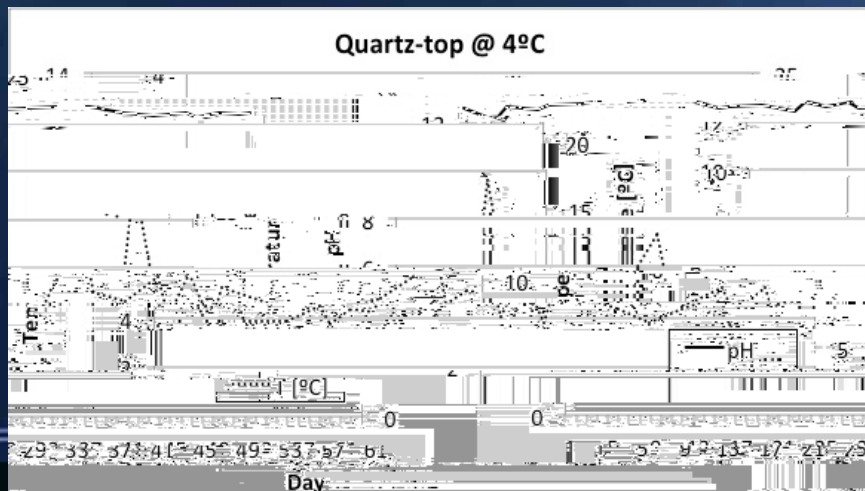
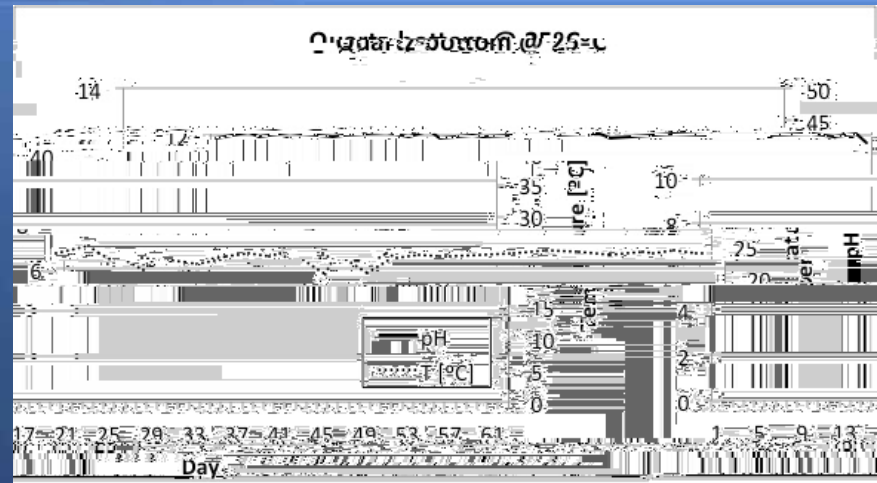
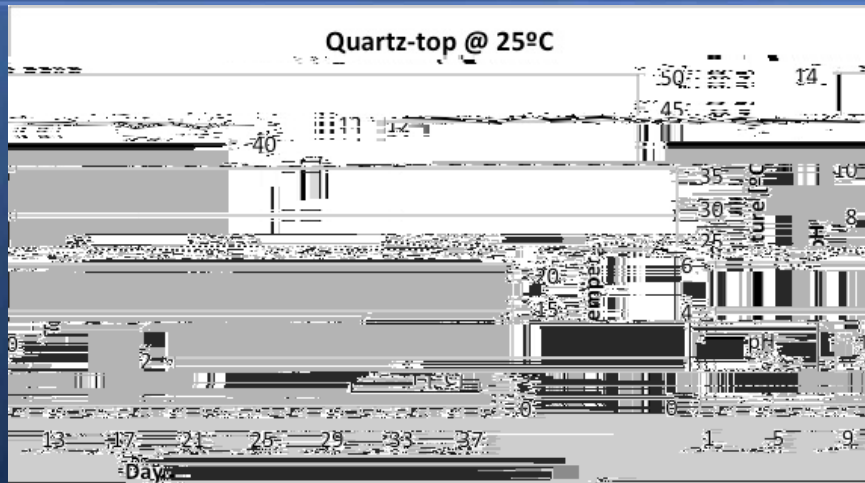
2011

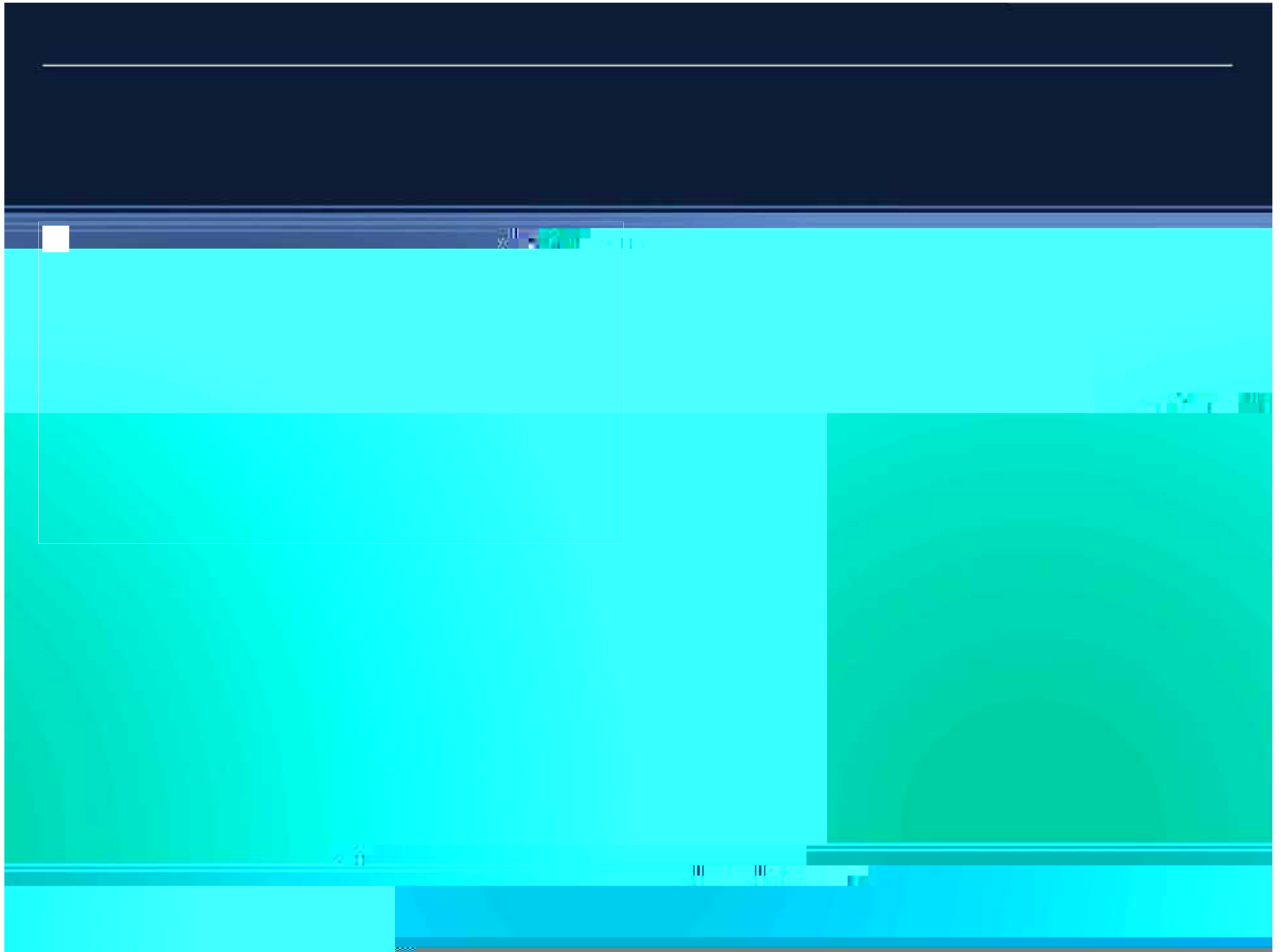












- A

- A

- A

- A

- A

---